



# COMPANY OVERVIEW



Established in 1892,  
Transvaal Rubber Company  
(Truco) manufacture a  
comprehensive  
range of rubber  
and hose products  
for mining, agriculture,

marine and general industries. It is a leading South African manufacturer and distributor of small and large bore hose, mouldings and extrusions, cured and uncured rubber sheeting, ship and harbour wall fenders, conveyor belting, bulk materials handling accessories and a wide range of adhesives.

**280+**  
number of  
employees



largest hose  
company in  
**Africa**



Started  
in 1892 **1892**  
**129** years old

**ISO**  
accredited:  
9001:2015







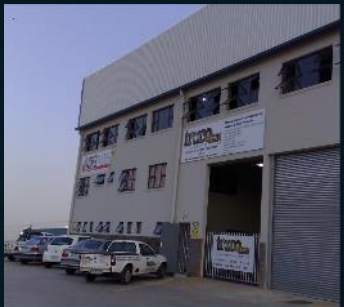
**Crown Mines  
Johannesburg**

Sheeting  
Mouldings & Extrusions  
Bellows  
Gaskets  
Small Bore Hose



**Chamdor  
Krugersdorp**

Slurry Hose  
BMH & Conveyor-  
Belts  
Fittings



**Durban**

Sales Office  
Distribution Centre



**Cape Town**

Sales Office  
Distribution Centre



**Accra, Ghana**



**Senegal**



**DAKAR  
SENEGAL**

**ACCRA, GHANA**

**TABLE BAY**

**GAUTENG**

**KZN**

# OE MINES SUPPLIED

<b>SNAP LAKE</b>	Canada	De Beers	<b>BULYANHULU</b>	Tanzania	Barrick
<b>BUZWAGI</b>	Tanzania	Barrick Gold	<b>SENTINEL</b>	Zambia	FQML
<b>ESSAKANE</b>	Burkina Faso	Iamgold	<b>MAAMBA</b>	Zambia	MCL
<b>FRONTIER</b>	Zambia	First Quantum	<b>KINSEVERE</b>	DRC	MMG
<b>KANSHANSHI</b>	Zambia	First Quantum	<b>KAMOTO</b>	DRC	Glencore
<b>KAYALEKERA</b>	Malawi	Paladin	<b>KAMOA</b>	DRC	Ivanplats
<b>LUMWANA</b>	DRC	Equinox Resources	<b>KIPOI</b>	DRC	Tiger Resources
<b>MANDENA</b>	Madagascar	Rio Tinto	<b>KIBALI</b>	DRC	Barrick
<b>COPPER</b>	Mauritania	First Quantum	<b>TASIAST</b>	Mauritania	Kinross
<b>MOMA</b>	Mozambique	Kenmare	<b>RBM</b>	South Africa	Rio Tinto
<b>SABODALA</b>	Senegal	Mineral Deposits	<b>KWALE</b>	Kenya	Base Resources
<b>TENKE</b>	DRC	Freeport – McMoRan Copper	<b>SIERRA RUTILE</b>	Sierra Leone	Iluka
<b>TREKKOPJE</b>	Namibia	Areva	<b>AMBATOVY</b>	Madagascar	Dynatec
<b>BOSETO COPPER</b>	Botswana	Discovery Copper	<b>AKYEM</b>	Ghana	Newmont
<b>OCP</b>	Morocco	Buzicellie	<b>PERKOA</b>	Burkina Faso	Trevali
<b>MUROWA DIAMONDS</b>	Zimbabwe	RioZim	<b>YANFOLILA</b>	Mali	Hummingbird Resources
<b>ZIM PLATINUM MINE</b>	Zimbabwe	Impala Platinum			
<b>ZIM ALLOYS CHROME</b>	Zimbabwe	Zimbabwe Alloys Ltd			
<b>UNKI PLATINUM MINE</b>	Zimbabwe	Anglo			

**MINES IN AFRICA AND CANADA  
 USING ORIGINAL TRUCO EQUIPMENT**



Click on a tab for website link to more information

RUBBER HOSES	OTHER HOSES	HOSE FITTINGS	RUBBER BELLOWS	BULK MATERIAL	FLOORING / SHEETING	VICTAULIC
--------------	-------------	---------------	----------------	---------------	---------------------	-----------

Large Bore Hose	Stainless Steel Braided Hose	Hose Reels	Flanged Rubber Bellows	Conveyor Belts <ul style="list-style-type: none"> <li>Textile Reinforced Steel Cord</li> <li>Chevron Rubber</li> <li>Steep Incline</li> <li>Accessories</li> </ul>	Rubber Flooring <ul style="list-style-type: none"> <li>Rubber Mat</li> <li>Disinfection Mats</li> <li>PVC Interlocking Floor Tiles</li> </ul>	Victaulic Grooved Joining Systems
Small Bore Hose	Composite Hose	Norma Products	Union-Type Rubber Bellows	Steel Rollers	Rubber Sheetting & Lining <ul style="list-style-type: none"> <li>Rubber Extrusions</li> <li>Rubber Adhesives</li> <li>Non Asbestos Sheeting</li> <li>Friction Wheels</li> </ul>	Victaulic Shouldered Systems
Dredger Hose	Small Bore Mining Hose	Camlock Couplings	Slurry Bellows / Expansion Joints	HDPE Rollers		Victaulic HDPE Couplings
Rubber Hose Bends	Small Bore PVC Hose	Straub Couplings		Composite Rollers		
Pulp and Slurry Hose	Layflat Hose	Dixon Fittings		Idler Frames		
Water Suction Delivery Hose	Hose Accessories	Perott & Storz Couplings		Pulleys		
Softwall Hose	Gates Oil & Gas Hose	Hose Clamps		Impact Beds		
Hardwall Hose	Upstream Oil & Gas Market			Belt Fasteners		
Reducers	Midstream Oil & Gas Market			Elevator Products		
Pinch Valve Sleeves	Downstream Oil & Gas Market			Belt Cleaners	Dam Liners	
Slurry bellows / Expansion Joints				Pulley Lagging		
Monitor Gun Hose				Belt Repair Solutions		
Self Floating Hose				Skirting		
				Belt Tracking Equipment		

# CONTENTS

Click on any tab to go to relevant section within the document

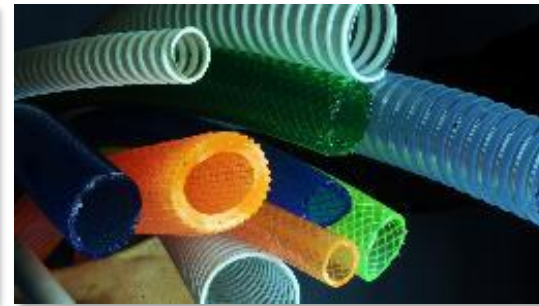
RUBBER HOSE



STAINLESS STEEL BRAIDED HOSE



OTHER HOSE



HOSE ACCESSORIES



RUBBER BELLOWS



BULK MATERIALS HANDLING



FLOORING / SHEETING



VICTAULIC





# RUBBER HOSE

# LARGE BORE HOSE



# RUBBER HOSE & MANUFACTURED PRODUCTS

Pinch Valve Sleeve



Monitor Gun Hose



Slurry Bellows/ Compensators





# LARGE BORE HOSE

Hardwall Hose



Softwall Hose



Water Suction & Delivery Hose



# RUBBER HOSE BENDS





# RUBBER HOSE BENDS

Hose bends are designed for sharper bend radius applications created by limited space. The correct liner and pressure rating, with additional liner on the outer arc, can cost-effectively increase the bend's lifespan. These high-performance hose bends are used extensively in mining, and marine applications throughout Africa and South Africa.

- Our range includes bore sizes from 3" to 48"
- Ceramic Lined Bends
- Used in mining, and marine applications
- Standard bend radii is 3 x the bend diameter
- Available with D-ring or Built-in flanges

## 45 Degree Bend



## 90 Degree Bend



# PINCH VALVE SLEEVES

Truco manufactures a wide range of pinch valve sleeves.

These are manufactured using high strength synthetic fibre or steel cord, from a variety of materials, including EPDM, Neoprene, Butyl and Nitrile, and can contain an abrasive resistant or acid resistant liner, depending on the application.

Rubber sleeves for Pinch Valves available for all sizes and types of valves up to 40 Bar WP





STAINLESS STEEL HOSE

# STAINLESS STEEL BRAIDED HOSE



# STAINLESS STEEL HOSE ASSEMBLIES

TRUCO now assembles high quality stainless steel braided hose. We assemble braided hose for use in numerous industries, including mining, petro-chemical, power generation, steel production to mention a few. We custom design the braided flexible hose assemblies to your exact specifications.

The stainless steel convoluted hose is especially designed to achieve several objectives in a pipework design. These include absorbing movement in a rigid pipe system, full vacuum application, able to withstand extreme operating temperatures and radiant heat, able to facilitate misaligned pipework, able to absorb lateral and angular movement in a pipework system etc. Stainless steel convoluted hose is a multi-purpose hose and is available in various stainless steel grades including A.I.S.I Grade 304, 316 and 321.





# STAINLESS STEEL HOSE ADVANTAGES

<b>Temperature:</b>	Excellent for extremely high or low temperatures.
<b>Chemicals:</b>	Excellent resistance in conveying and exposure to wide range of chemicals.
<b>Permeation:</b>	Metallic hose is not subject to permeation such as non-metallic hoses are.
<b>Hose failure:</b>	Generally speaking, metallic hoses are not subject to sudden failure, warning signs such as leakage are evident prior to failure.
<b>Additional hose protection:</b>	Metallic hoses can be covered with a range of additional cover materials to suit various applications, such as glass fibre cloth to prevent radiant heat, external wire armouring, rubber covers etc.
<b>Vacuum:</b>	Metallic hose assemblies can withstand a full vacuum.
<b>End fittings:</b>	A vast array of fittings are available for metallic hose assemblies, from BSP nipples to weld-neck flanges.
<b>Hose testing:</b>	All braided hose assemblies undergo pressure leak testing, certificates are available on request.
<b>Hose degreasing:</b>	Hose assemblies can be degreased and capped for oxygen service at the customer's request.



# SERVICE LIFE

The Stainless steel corrugated hose is engineered to provide maximum service life when properly installed. Incorrect installation, incorrect flexing or careless handling in an application will reduce the effective service life of the hose and cause premature failure of an assembly.

The service life can be affected by many external factors, the environment surrounding the assembly as well as the media being transferred will together determine a general guide to the service life.

Nominal Dia.		Outside Dia. (mm)			Weight (Kg/m)			Min. Bend Radius (mm)		Working Pressure (kPa)			Burst Pressure (kPa)		
mm	inch	SS0	SS1	SS2	SS0	SS1	SS2	Static	Dynamic	SS0	SS1	SS2	SS0	SS1	SS2
6	1/4	9.60	10.80	12.10	0.13	0.25	0.39	25	100	1000	15000	22500	4000	60000	90000
10	3/8	14.50	15.50	16.70	0.19	0.37	0.53	38	130	500	10000	15000	2000	40000	60000
12	1/2	16.70	18.00	19.72	0.34	0.50	0.68	45	140	500	8500	12750	2000	34000	51000
20	3/4	26.70	28.00	29.20	0.58	0.88	1.18	70	170	300	6400	9600	1200	25600	38400
25	1	32.20	33.70	34.90	0.79	1.12	1.46	85	190	300	5000	7500	1200	20000	30000
32	1 1/4	41.20	42.60	43.80	1.13	1.60	2.05	105	260	300	4600	6900	1200	18400	27600
40	1 1/2	49.50	50.90	52.10	1.25	1.84	2.43	130	300	200	4200	6300	800	16800	25200
50	2	60.30	61.70	62.90	1.34	2.27	3.20	160	320	200	3600	5400	800	14400	21600
65	2 1/2	84.00	85.30	88.30	1.76	2.78	3.83	175	500	100	2600	3900	400	10400	15600
80	3	98.00	100.30	102.30	1.81	2.99	4.19	200	600	100	2000	3000	400	8000	12000
100	4	124.00	126.30	128.30	2.52	4.01	5.50	250	700	80	1800	2700	320	7200	10800
125	5	153.00	155.30	157.30	3.74	5.61	7.03	325	900	50	1600	2400	200	6400	9600
150	6	178.00	180.30	182.30	5.19	7.11	9.04	375	1000	50	1200	1800	200	4800	7200
200	8	232.00	234.30	236.70	8.31	14.13	19.99	450	1100	50	1200	1800	200	4800	7200
250	10	283.97	287.52	290.83	10.17	19.30	28.44	635	1270	35	1585	2530	140	9329	10128
300	12	335.64	339.39	342.90	13.50	22.19	30.89	762	1524	21	1110	1771	84	4433	7094
350	14	373.37	376.93	380.49	21.10	32.48	43.85	889	1778	21	820	1310	84	3281	5240

SS0 – Tube only  
 SS1 – Tube with single braided cover  
 SS2 – Tube with double braided cover





RUBBER HOSE

# SMALL BORE HOSE



# SMALL BORE RUBBER HOSE

**Greenline Air & Water**



**Goldline Air & Water**



**Rubber Sand  
& Shotblast**



**Rubber Suction  
& Delivery**



**Blue Non-marking &  
Non-conductive Nitrile**



**High Pressure  
Jackhammer**



**Blue Oxygen &  
Red Acetylene**



**Radiator Hose**





# SMALL BORE RUBBER HOSE

Furnace coolant hose



Steam Hose



Chemical Suction & Delivery Hose



Oil Resistant Rubber



GATES – Oil & Gas Hose  
(Up, Mid & Downstream)



Fuel Line



# PVC HOSE

## SMALL BORE HOSE





# SMALL BORE PVC HOSE



**Truclear**



**Clear Reinforced**



**Clear Blue Reinforced**



**Truco-Steel Clear PVC Suction Hose**



**Suction & Delivery**



**HD Suction & Delivery**



**High Pressure Crop Spray**



**Garden**



**Multi Purpose**



# SMALL BORE PVC HOSE AND HDPE PIPING



Rockdrill PVC Mining



Anti-Static Loading



Green PVC Mining Hose



HDPE Piping



Orange PVC Mining



Blue PVC Mining



Dragline Hose



# TRUCO LAYFLAT AND FIRE HOSE

**Blue PVC Layflat**



**Red PVC Layflat**



**Yellow PVC Layflat**



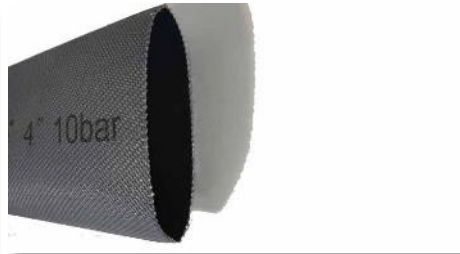
**Black Nitrile Rubber Layflat**



**Yellow Rubber Compressor Hose**



**Grey PVC / Nitrile Layflat**





# RUBBER AND PVC HOSE FITTINGS AND ACCESSORIES



# HOSE ACCESSORIES AND FITTINGS

2-piece Hose Floats



Hose Reels



Hose Clamps



2-piece Hose Clamps



Wear Detectors



Hose Couplings



Camlock Couplings



Flanges



Fittings



# TRUCO ARE PROUD DISTRIBUTORS OF THE FOLLOWING BRANDS:



VICTAULIC PIPE  
JOINING SYSTEMS



STRAUB  
COUPLINGS



GATES OIL & GAS  
HOSE PRODUCTS



DIXON  
FITTINGS



NORMA  
CLAMPS





# COMPENSATORS RUBBER BELLOWS



# RUBBER BELLOWS

Reduce the risk of damage to your rubber or steel pipelines caused by excessive vibration by installing rubber bellows/compensators from Truco. Available in a variety of compounds.

## Slurry Bellows/ Compensators





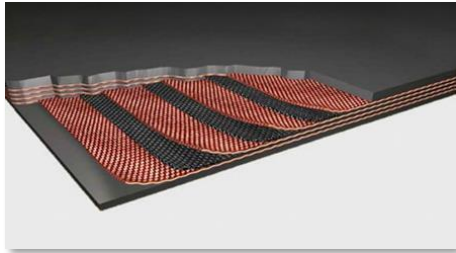
# BULK MATERIAL HANDLING CONVEYOR BELTS





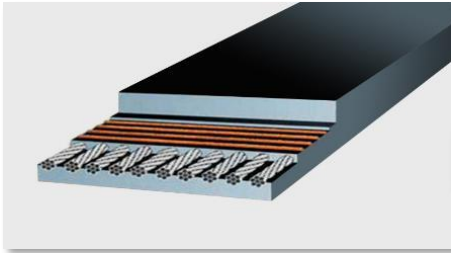
# CONVEYOR BELTS

## Textile



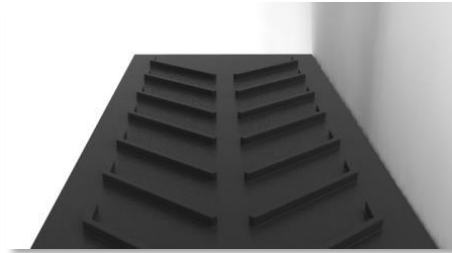
Fabric reinforced conveyor belts from Truco are ideal for mining, mineral processing, quarrying, earth moving, agriculture and various other conveyance demands, cut to the specifications demanded by the application. These conveyor belts can be compounded with abrasion, impact, heat, fire and oil resistant covers, ensuring suitability for a wide range of applications.

## Steel Cord



Used in mining for transporting large, heavy volumes over long distances. Top and bottom covers are manufactured to specified thicknesses and grades that are best-suited to each application. These conveyor belts can be compounded with abrasion, impact, heat, fire and oil resistant covers, ensuring suitability for a wide range of applications.

## Chevron Rubber



Truco manufactures top-quality Chevron belting for the transport of aggregate, fertilizer, grains, sand, bark and wood chips. Belt widths can be cut between 600 mm and 1 000 mm, and cleat heights from 15 to 20 mm.

## Solid Woven PVC/PVG



Solid woven belting is used mainly in underground coal mining applications. It has a one piece woven carcass that has excellent fastener retention properties. These conveyor belts can also be hot spliced with a finger joint. The carcass is also designed for high impact and also has a higher resistance to ripping and tearing. The belt is dipped in PVC and in some cases is laminated with a PVG nitrile rubber for certain applications. The belts are used where fire retardant and anti-static properties are critical.

## Steep Incline



Truco supplies a range of cross-stabilised steep incline conveyor belts to the mining and construction industries across South Africa and Africa.

As a complete solution, Truco also fabricates and stocks steep incline belting. These are fitted with sidewalls and cleats so there are no transfer points, no spillage and a maximum utilisation of space.

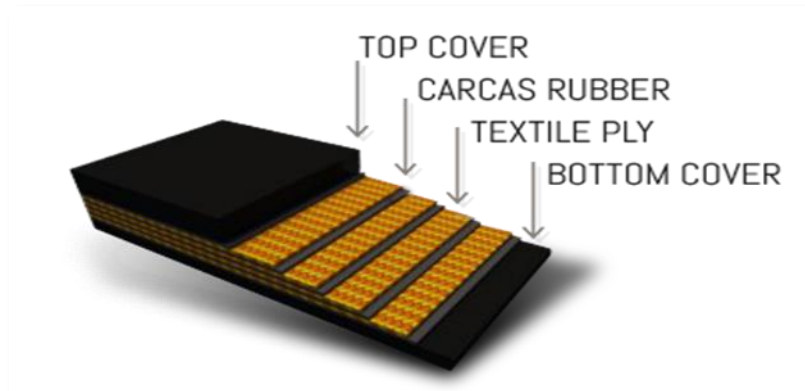
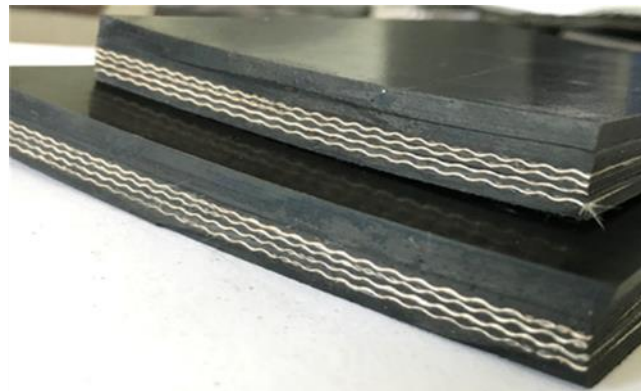


# CONVEYOR BELTS

Various cover grades and available to suit specific applications:

- Abrasion resistant
- Oil and chemical resistant
- Heat Resistant
- Fire Retardant

OUR BELTS CONFORM TO SANS  
STANDARDS AND OUR FACTORIES ARE  
AUDITED AND CERTIFIED BY MASC



# BULK MATERIAL HANDLING ROLLERS AND FRAMES





# ROLLERS AND FRAMES

Truco offers high quality rollers and frames.

The range includes SANS spec products and we also manufacture non-standard sizes.

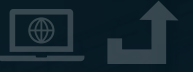
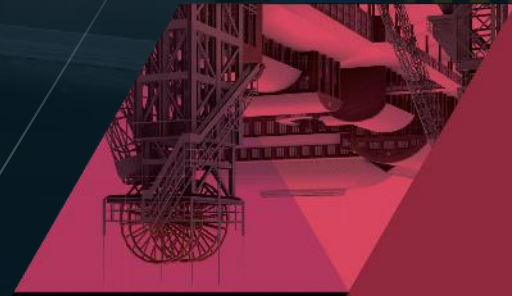
Materials for rollers includes Steel, HDPE, Glass reinforced HDPE, UHMWPE and Fire Retardant materials.



# BULK MATERIAL HANDLING BELT SCALES



51.110.C00  
44303016.100





# TRUCO BELT SCALES



Truco belt scale offering includes belt weighing scales as well as remote monitoring systems. We can design, assemble, install and calibrate these scales. We can also retrofit our remote monitoring to most scale types on existing conveyor structures.

These scales are typically used on Aggregate, Mining, Cement, Sugar and Port conveyor systems.





# BELT SCALES

## REMOTE MONITORING THROUGH A VIRTUAL SCADA AS A VALUE ADD:

- Less people required on site or in the control room
- Updates every 60 seconds
- Using Telegram App – immediate info can be received from the Scale
- We can also troubleshoot and zero your scale remotely as per your request
- The Virtual Scada can be customised to your requirements – this can include multiple scales to enable plant balancing

**13 Jul 2020 Emang Mine Production Overview Report**

U	S	E	Description	Tons	CP	Tons/H	R	Speed	BLoad	Target	Plan	Actual	D13 Tons	M/Target (29)	MTD Actual	MTD Target	Vary	Forecast (29)	Totalizer
Stop			CV015	124	B	0	5d	0	0	1000	654	18%	281	58000	5823	26654	-20831	12062	14577

**Down-Time**

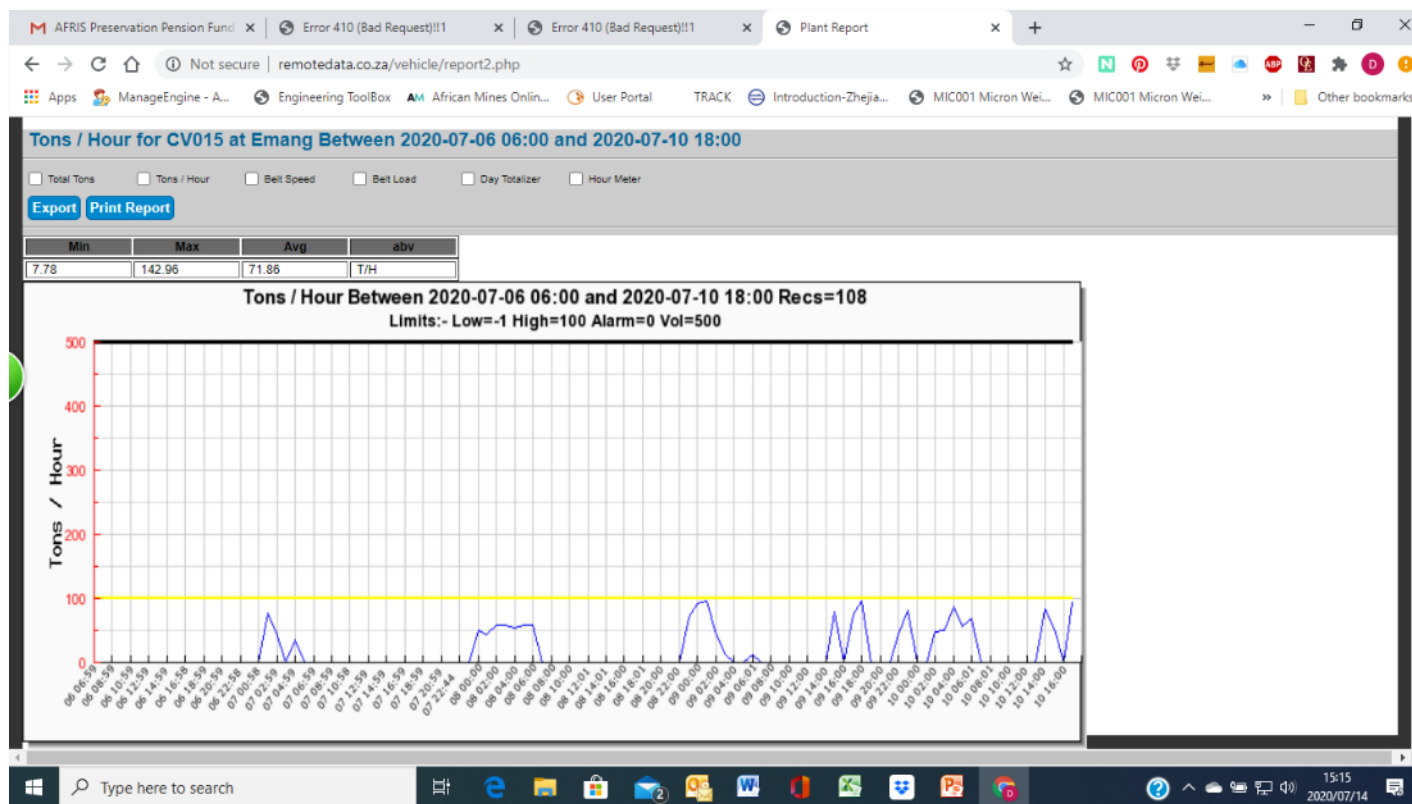
Run: 73%  
Stop: 27%



# BELT SCALES

## INFORMATION AVAILABLE ON REMOTE MONITORING REPORTS:

- Belt total tons for day, month or over a period selected by the user
- Belt Tons/Hour
- Belt Speed
- Empty Belt time – this could be for energy savings, production related issues (problem further up the line i.e feed conveyor is not running, blocked chute etc)
- Alarms can be sent to your phone for set parameters that are breached



# BULK MATERIAL HANDLING TRUSPLICE





# TRUSPLICE

Faster than hot and cold splicing

Can be used as a temporary or a permanent solution in some applications

Minimal tooling required

Minimal skills required for installation – no additional contractors required on site

Splicing can be done in all weather conditions

Splice is friendly – splice is counter sunk

Truco can supply skiver/drill kit

Full range to cover most belt classes



# TRUSPLICE



Full instructions on installation procedures are available

Full training is also offered

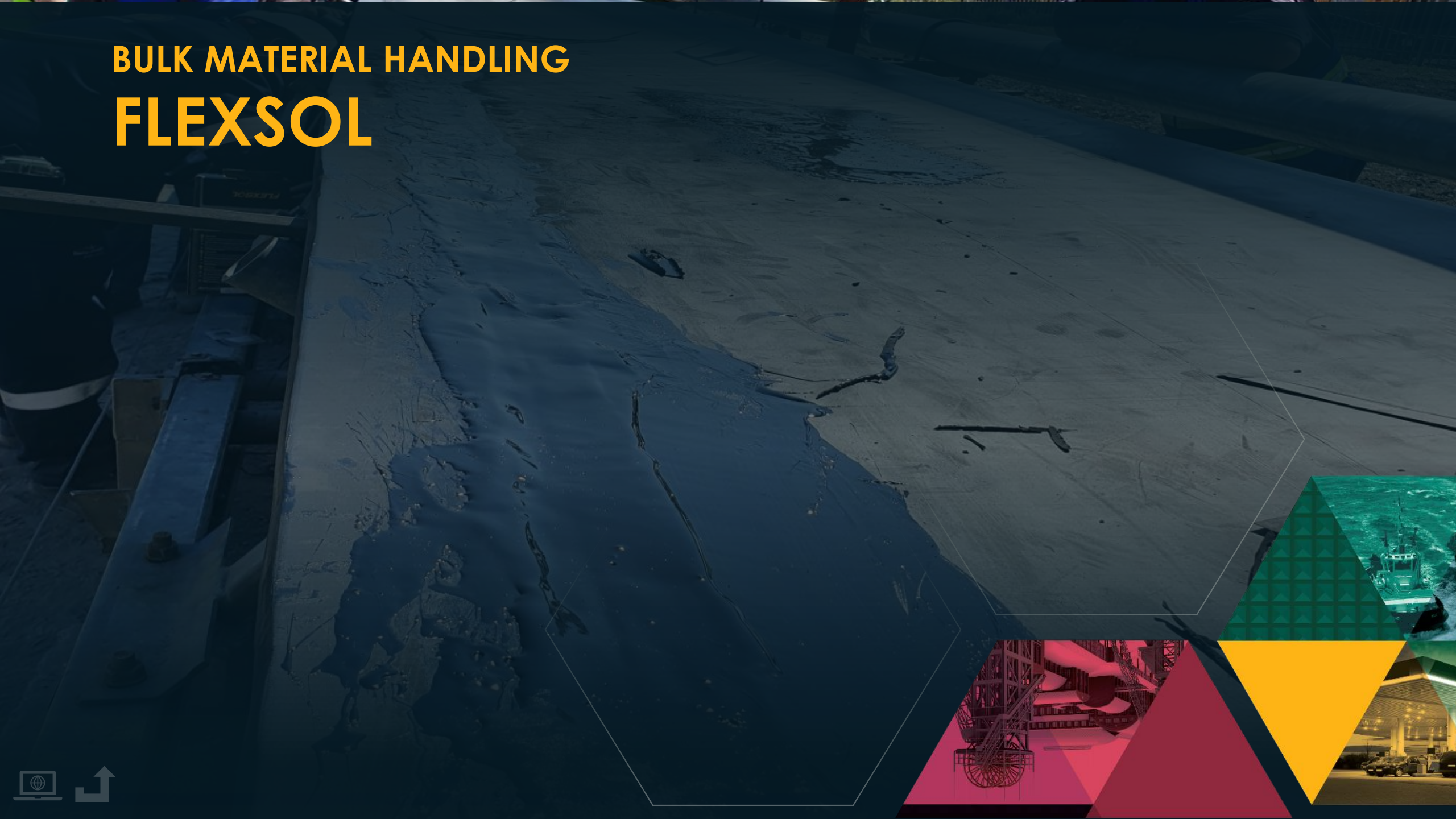


**Available in roll form:**  
 25mt lengths in TS63  
 (Class 630 and lower)

**Various grades available:**  
 abrasion, oil and heat resistant



# BULK MATERIAL HANDLING FLEXSOL





# FLEXSOL



**REPAIR  
CONVEYOR BELT  
HOLES, TEARS  
AND EDGE  
DAMAGE**

## FEATURES AND BENEFITS

Minimum tooling required

No insert or splicing required

Minimal downtime – ready to run in 45 minutes!

Easy installation!

Very high adhesion means that the repair will not separate from the belt

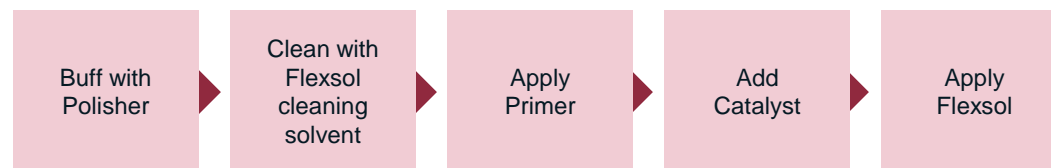
Different types available:  
Rubber adhesion as well as Rubber/Steel adhesion



# FLEXSOL

Flexsol is the most economical solution for belt repairs on rubber conveyor belting. The easy application of this product enables increased production up time without the need to call in professional belt splicers to install a new belt or to fit an insert.

- Used for edge damage, belt tears as well as holes straight through the belt. Preparation is very quick and simple.



- It is self levelling and can be applied in such a way that it is level with the belt surface which makes it scraper friendly.





# FLEXSOL





# RUBBER SHEETING FLOORING/SHEETING



# RUBBER FLOORING

## Anti-Static Rubber



Antistatic flooring is used to prevent damage to electrical and computer components.

## Fine Rib Rubber



This rubber flooring is ideal for non-slip applications.

## Flat Rib Rubber



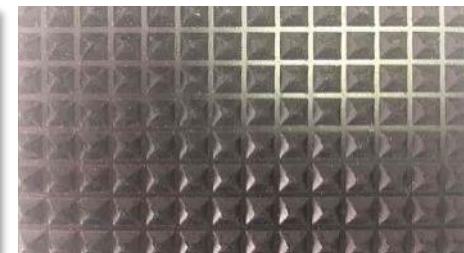
Flat ribbed rubber flooring with reinforced insertion cloth.

## Horse Box Rubber



Thick horse box ribbed rubber flooring is widely used in the load boxes of trucks and bakkies.

## Pyramid Rubber



This rubber flooring is designed for non-slip applications.

## Rhomboid Rubber



This rubber flooring is designed for non-slip applications.

## Rice Rubber



This rubber flooring is designed for non-slip applications.

## Anti-Slip Hole Mat



This versatile rubber flooring product is used in trucks, the floor of the load box and showers to prevent slipping.

## Stud Rubber



Stud rubber flooring is slip-resistant and normally used in highly traversed areas.

## Fishbone Rubber



Fishbone rubber flooring is a general non-slip flooring mat with a raised stud surface.





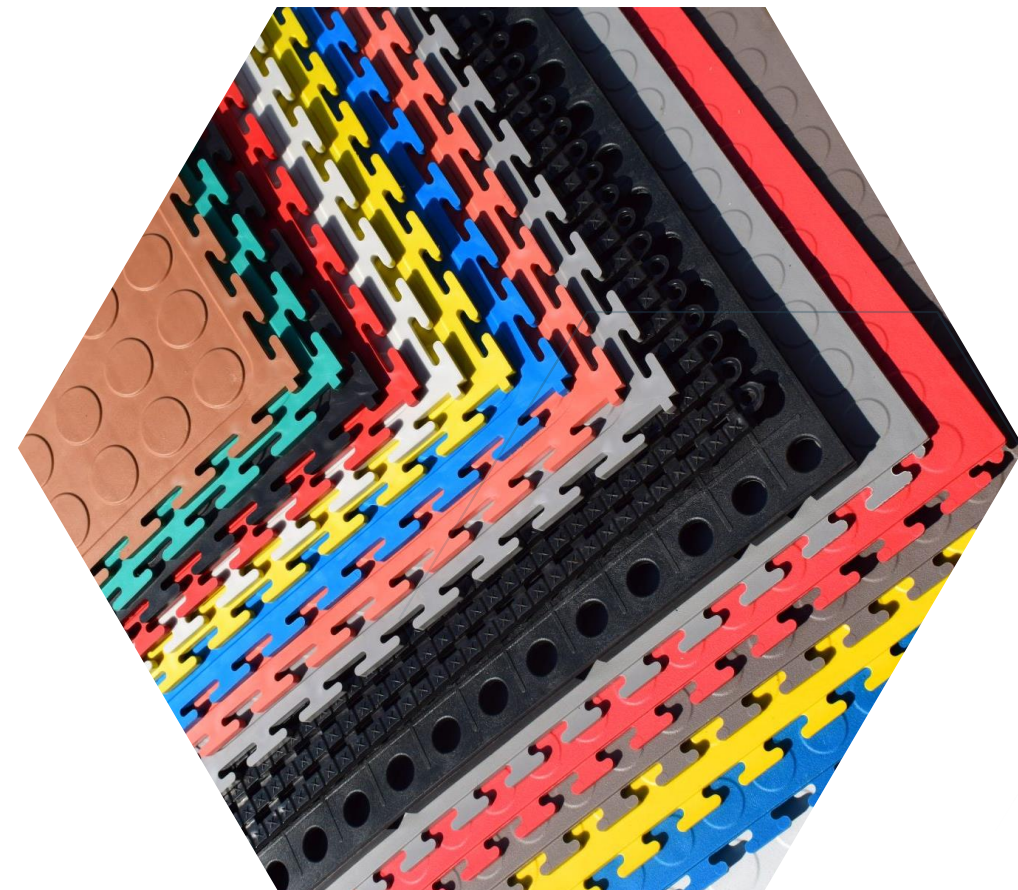
# INTERLOCKING PVC FLOOR TILES

Truco PVC floor tiles are available as interlocking tiles, providing a high-quality, slip-resistant floor covering for any high-traffic area.

They are available in two thicknesses: 5.2mm and 6mm (500 x 500 mm) and (330 x 330 mm), and are available with tapered edging strips.

PVC interlocking floor tiles are ideal for any high-traffic environment, especially in closed spaces where the odourless nature of PVC is an advantage over rubber flooring.

Typical applications for PVC flooring include car service centres, tyre fitment centres, gyms, kitchens, work areas or pedestrian areas in airports and train stations.





# RUBBER SHEETING & LINING

Truco is one of the largest distributors of industrial rubber sheeting in Africa. Our comprehensive range includes **Insertion rubber**, abrasion resistant **Trucotex®**, **Neoprene**, **Nitrile**, **Butyl**, **Silicon**, **Hypalon** and **Viton**.

Made from natural and synthetic rubber, this range of rubber sheeting is ideal for applications such as chutes, buffers, gaskets and scrapers.



## Specialised rubber sheeting

Characterised by a smooth finish and strong performance in harsh environments, this range of rubber products is ideal for chutes, cyclones and pipes.



## Abrasion resistant rubber sheeting

Characterised by a smooth finish and strong performance in highly abrasive environments, Our range of abrasion resistant lining rubber products is ideal for chutes, cyclones and pipes.



# RUBBER LINING

Truco full service offering to meet your rubber lining needs includes:

- Recommendations and supply of suitable cured and uncured rubber types, primers and glues
- Site quality assurance to make sure your job is successful where you are using your own rubber lining team
- Full outsourcing of your rubber lining job requirement for on-site work as well as co-ordination of off-site steam cured lining
- Costing of your rubber lining job
- Training of your rubber lining team in order for you to develop your own in-house rubber lining team
- Quality inspections and recommendations of existing rubber lining jobs

## PRODUCTS USED IN RUBBER LINING JOBS

Truco Steam Cure Rubber Compound Range

Truco Chemical Cure Rubber Compound Range

Trucotex T36 Rubber Abrasive Resistant Sheeting

Glues and Primers

Rubber Lining tool kits



# SPECIALISED ABRATION RESISTANT LINING

## Trucotex®



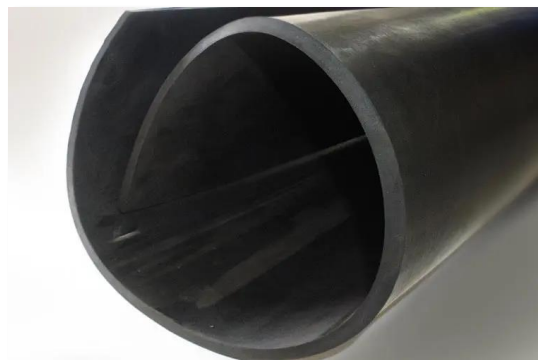
- Pure NR
- Excellent abrasion resistance
- For chutes, pipes, cyclones, skirts & scrapers
- Tensile strength: 24 MPA
- Smooth finish
- Hardness IRHD: 35

## Trucoline®



- High NR content
- Good abrasion resistance
- For chutes, pipes, cyclones, skirts & scrapers
- Tensile strength: 15 MPA
- Smooth finish
- Hardness IRHD: 40

## Trucotuff®



- Silica reinforced NR / SBR blend
- For heavy-duty applications, e.g. screen decks, chutes & transfer points
- Excellent resistance to cutting/slashing by dry, sharp-edged particles
- Smooth finish
- Hardness IRHD: 70





# TRUCO T36 PREMIUM LATEX RUBBER LINING

**General Properties:**

Premium Latex Rubber

Exceptional abrasion resistance for fine material in wet abrasion

**Application:**

Chutes / Pipes / Cyclones / Skirts / Scrapers

**Finish:**

Smooth / Buffed

**Hardness +- 3° IRHD:**

36

**Specific Gravity (SG) 0.96**

**Tensile Strength MPA:**

23

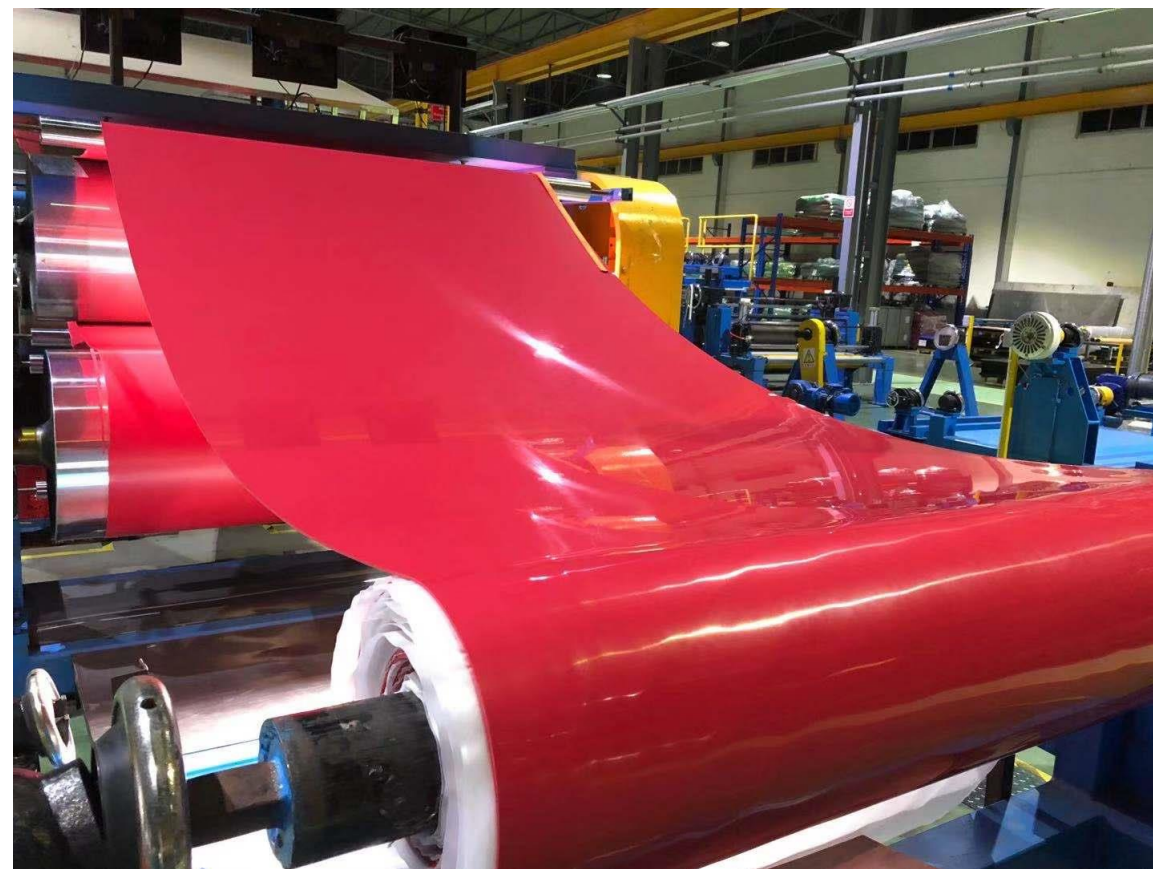
**Elongation @ break %:**

810

**Compression Set %: 30**

**Temp Range:**

-40°C +70°C



# TRUCO T36 PREMIUM LATEX RUBBER LINING





# TRUCO T36 PREMIUM LATEX RUBBER LINING

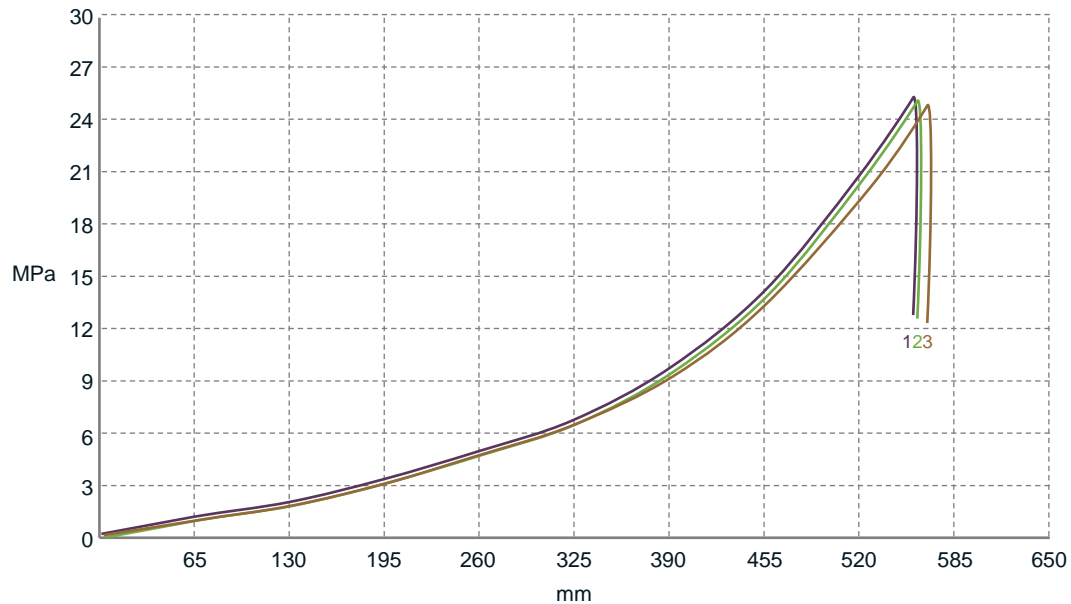




# SHEETING COVER TENSILE TEST REPORT

Customer: Liquid Phase Latex Red 36  
Sheeting: .3.0mm Red

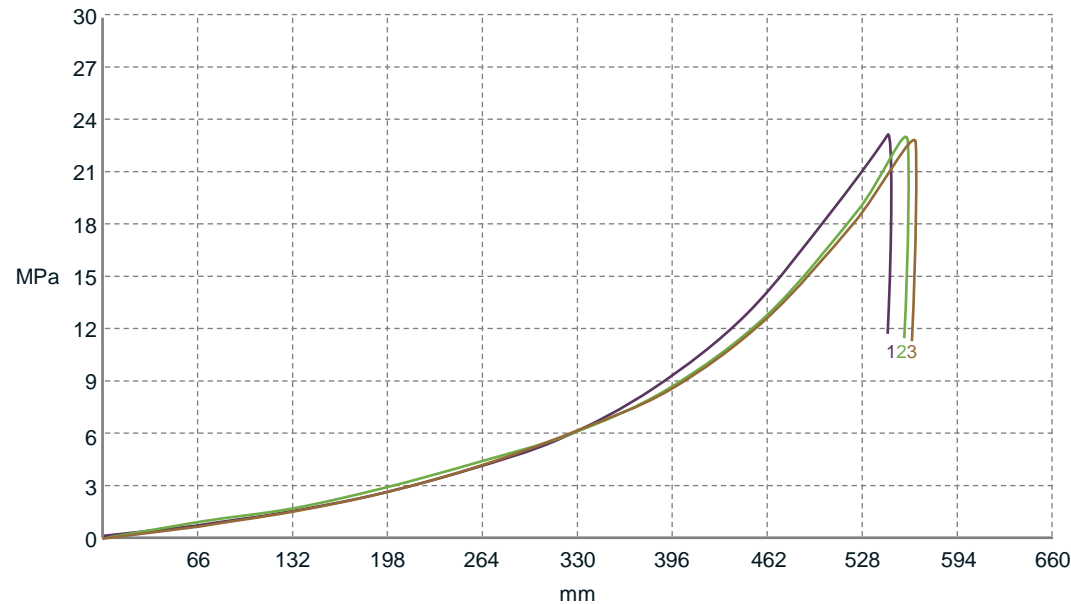
MIN Specification: 23.0 MPa  
Elongation: 810%



Report No	2	Test Time	Test No.	Elongation %	Tensile MPa
NR 36 Red Latex	2021.06.04	9:40:04 AM	1	1114	25.12
NR 36 Red Latex	2021.06.04	9:44:21 AM	2	1134	24.63
NR 36 Red Latex	2021.06.04	9:48:43 AM	3	1120	24.98

Customer: Liquid Phase Latex Red 36  
Sheeting: .3.0mm Red

MIN Specification: 23.0 MPa  
Elongation: 810%



Report No	2	Test Time	Test No.	Elongation %	Tensile MPa
NR 36 Red Latex	2021.06.04	9:19:55 AM	1	1093	24.64
NR 36 Red Latex	2021.06.04	9:24:09 AM	2	1126	22.97
NR 36 Red Latex	2021.06.04	9:28:24 AM	3	1119	23.30



# DAM LINERS

## APPLICATIONS

### Aquaculture



Geomembrane liners are non-toxic, and can be used in fish ponds, shrimp ponds and other aquacultures.

### Landfills



Ideal for a bottom landfill liner, landfill sealing cover, leachate regulating pool liner, etc.

### Water Treatment

### Systems



Smooth Geomembrane provides a high-quality lining solution for sewage treatment pools, evaporation ponds, and other water treatment systems.

### Mining



Ideal for use in washing pools, pool heap leaching, heap yards, dissolving tanks, storage tanks, the bottom of the tailing seepage control and more.

### Other



Suitable for applications in environment protection and sanitation, water conservancy, municipal projects, landscaping, petrochemical industry, salt industry, agriculture, etc.





# PIPE JOINING SYSTEMS VICTAULIC PRODUCTS



# VICTAULIC GROOVED JOINING SYSTEMS



Ideal for maritime, mining, industrial, petrochemical, power generation, water treatment and oil and gas industries, this range includes: Grooved End couplings, fittings, valves and accessories

## FEATURES AND BENEFITS

Requires 45% less man-hours than welding

Reduced material handling requirements by 30 to 70%

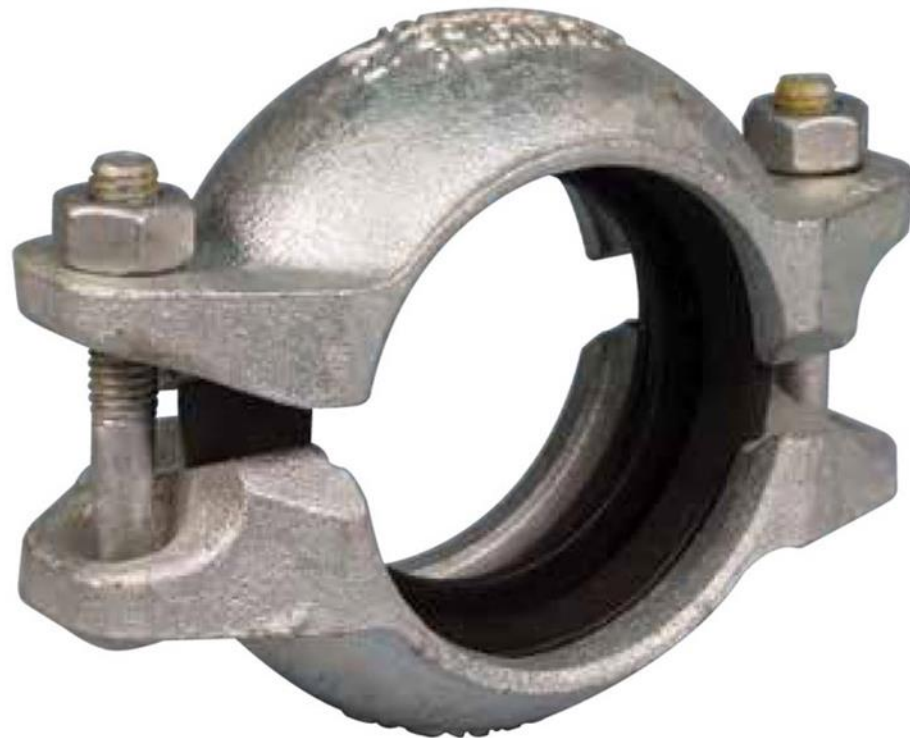
Reduced overall energy consumption

Eliminate costly fire watch and hazardous fumes and flames





# VICTAULIC SHOULDERED SYSTEMS



These shouldered joining systems are ideal for use in cement, mining and concrete industries. Our full range includes couplings, fittings and valves that are safer and 10 times faster to install than alternative pipe joining methods

## FEATURES AND BENEFITS

Zero leak path for compressed air systems

Allow for expansion, contraction and deflection of the piping system

Offer system design flexibility

Ideal for abrasive applications

Improved installation productivity - up to 10 times faster!



# VICTAULIC HDPE COUPLINGS



By providing a plain end solution, this range of couplings offers the easiest & fastest way to connect HDPE pipe.

Ideal for mining, water distribution, water purification, industrial applications, power generation, and municipal and agricultural use.

## FEATURES AND BENEFITS

Easily incorporated to standard fittings

Fastest way to join HDPE without the use of fusion or welding tools

Small range of transition couplings are available (HDPE to Grooved or Shouldered)







THANK YOU

[www.truco.co.za](http://www.truco.co.za)

**truco**  Est. 1892  
Leaders in fluid and material handling solutions